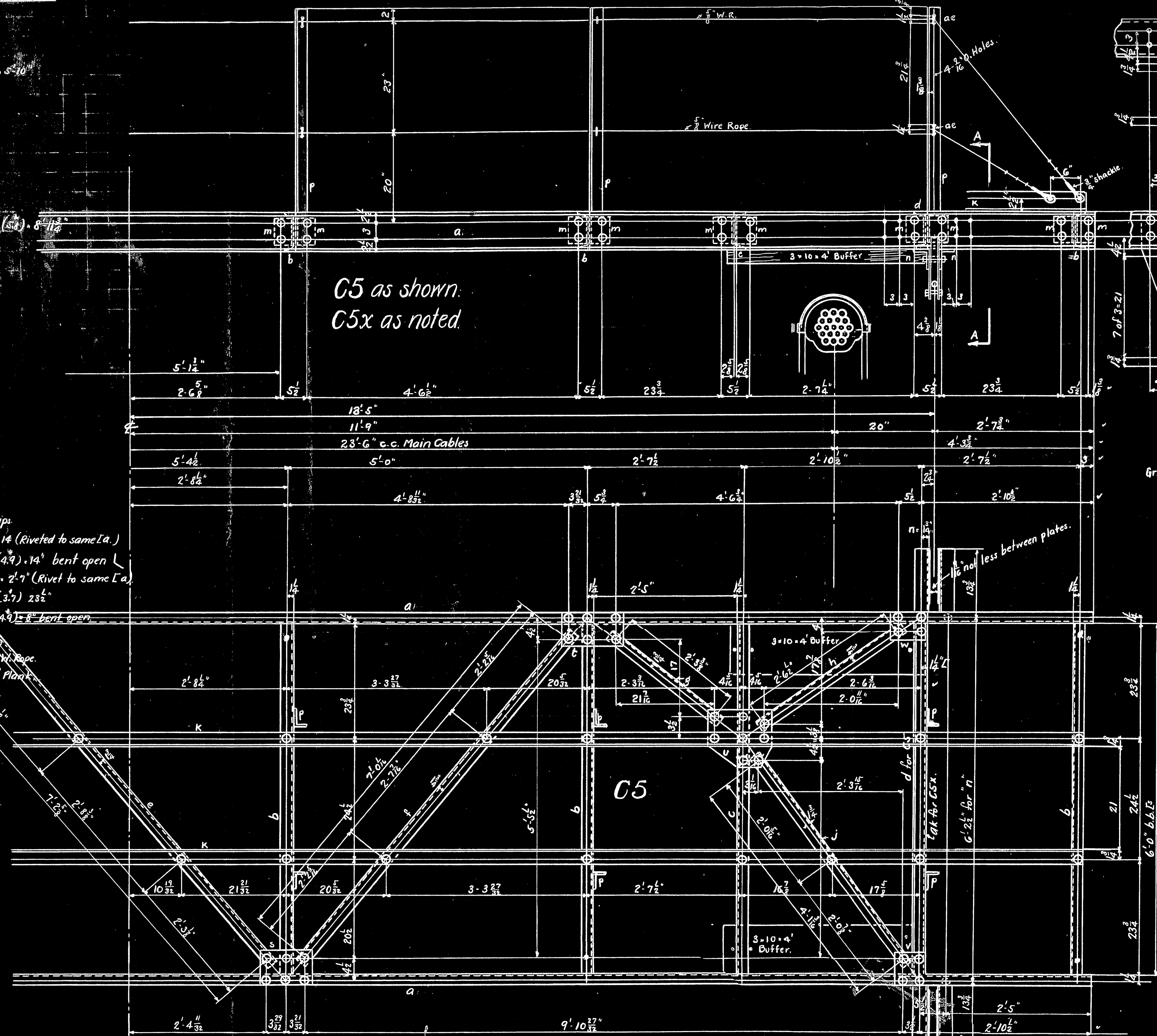


For One C5x

- a 2 Ls
- b 2 Ls
- c 2 Ls
- ak 2 Ls 8" x 11.50" (2.26 x .22) - 32' 11"
- e One L
- f 2 Ls
- g 2 Ls
- h 2 Ls
- j 2 Ls
- k 2 Ls
- m 2 Ls
- am 2 Ls 4" x 3.37" (3.37 x .14) - 8' 11"
- p 2 Ls
- q 2 Ls
- s 2 Ls
- t 2 Ls
- u 2 Ls
- v 2 Ls
- w 2 Ls
- x 8 Pls.
- y 4 G.P. Seps
- z 4 R. Bolts
- aa 8 Pls.
- ab 4 Shrs.
- ac 4 Pins
- ad 16 R.B.
- ae 48 5/8" W.R. Clips
- an 2 Pls. 10" x 1/2" x 1/4" (Riveted to same La.)
- ap 2 Ls 3" x 3/4" (3.75 x .14) bent open
- aq 2 Pls. 20" x 1/2" x 1/4" (Rivet to same La.)
- ar 4 Ls 3" x 3/4" (3.75 x .14) bent open
- as 2 Ls 3" x 3/4" (3.75 x .14) bent open

- 8 3/4" Shackles
- 4 Pos. 5/8" x 40' Wire Rope
- 4 2" x 10" x 1/4" Plank



For One Cage Platform C5

- 738# a 2 Ls 8" x 11.50" (2.26 x .22) - 32' 11"
- 405 b 6 Ls " " " " " " " " " " " "
- 138 c 2 Ls " " " " " " " " " " " "
- 27 d 2 Ls " " " " " " " " " " " "
- 49 e One L 3" x 2 1/2" (3.75 x .14) - 7' 5 1/2"
- 17 f 2 Ls " " " " " " " " " " " "
- 19 g 2 Ls " " " " " " " " " " " "
- 29 h 2 Ls " " " " " " " " " " " "
- 216 k 2 Ls 4" x 3 3/8" (4.375 x .14) - 31' 10"
- 260 m 40 Ls 6" x 4 3/8" (6.0 x .14) - 8' 6"
- 197 n 4 Ls 4" x 3 3/8" (4.375 x .14) - 8' 6"
- 182 p 12 Ls 3 1/2" x 2 1/2" (3.75 x .14) - 4' 11"
- 61 q 12 Ls 2 1/2" x 2 1/2" (2.75 x .14) - 22 1/2"
- 10 r 2 Pls. 7" x 1/2" x 1/4" (7.0 x .14)
- 12 t 2 " 7" x 1/2" x 1/4" (7.0 x .14)

- 15 u 2 Pls. 10 1/2" x 1 1/2" (10.5 x .14)
- 6 v 2 Pls. 7" x 1/2" x 1/4" (7.0 x .14)
- 8 w 2 " 7" x 1/2" x 1/4" (7.0 x .14)
- 60 x 8 " 9 1/2" x 1/2" x 1/4" (9.5 x .14)
- 1 y 4 G.P. Seps. 1 1/2" lg.
- 7 z 4 R. Bolts 3/4" x 8" u.h.
- 100 aa 8 Pls. 2" x 1/2" x 1/4" (2.0 x .14)
- ab 4 Shrs. 10" x 1/2" x 1/4" (10.0 x .14) for 1 1/2" Rope.
- ac 4 Pins 1" x 1/2" x 1/4" (1.0 x .14) bore for 1/4" cotter.
- ad 16 R. Bolts 1/2" x 2"
- ae 24 5/8" W.R. Clips
- af 8 3/4" Shackles
- ag 4 Pos. 5/8" W.R. 40'
- ah 24 5/8" W.R. Clips
- ai 4 2" x 10" x 1/4" Plank (93' B.M.)

For One Platform C6

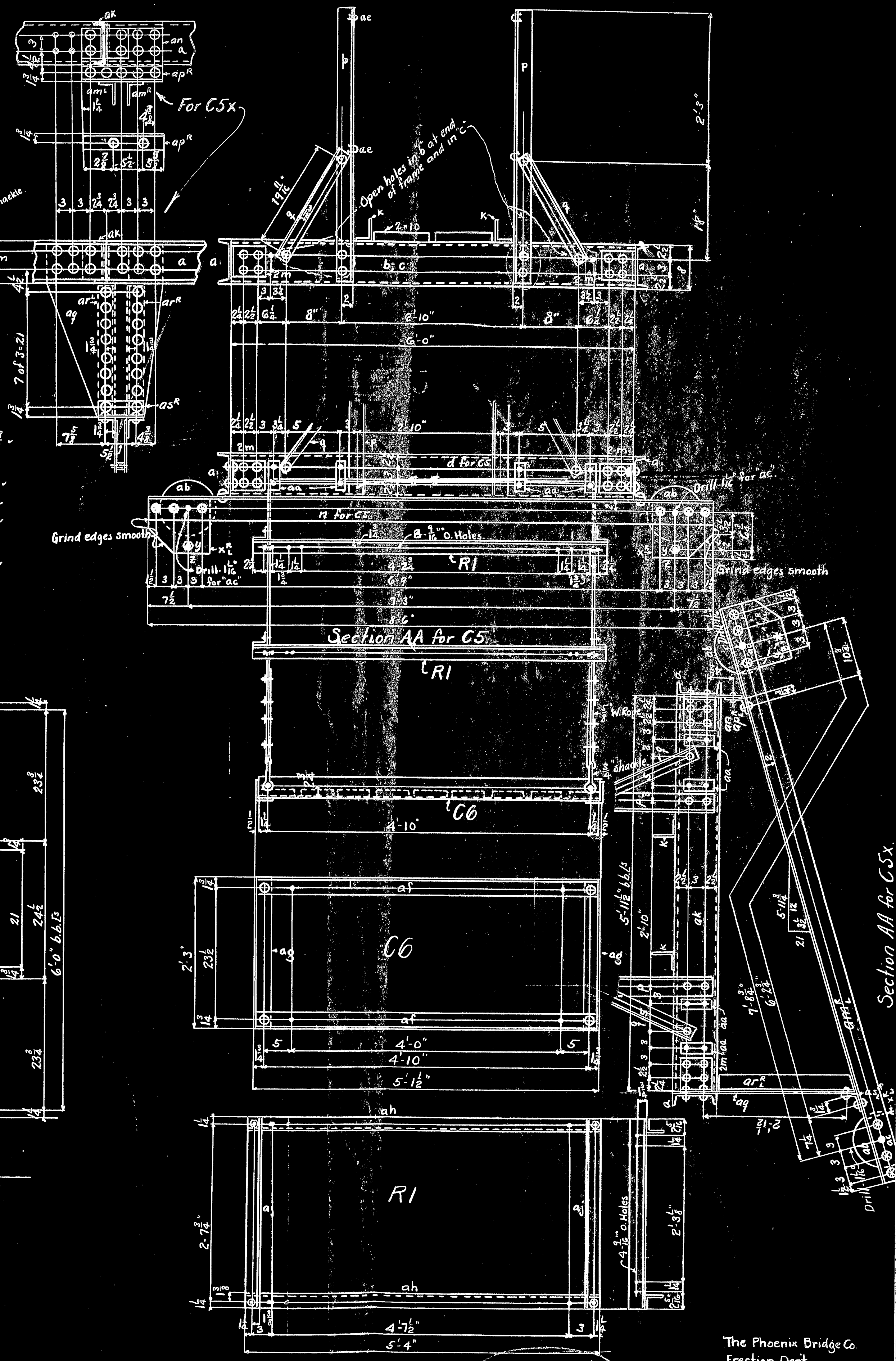
- 45# af 2 Ls 4" x 3 3/8" (4.375 x .14) - 5' 0 1/2"
- 20 ag 2 Ls " " " " " " " " " " " "
- 20 ah 4 3/4" Shackles with pins
- 80 ai 9" 2" x 6" x 2 1/2" Plank (20' B.M.) fasten to "af"
- 40 aj 4 Pos. 5/8" W.R. 16'
- 220\* ak 20 5/8" W.R. Clips

For One Railing R1

- 48 ah 2 Ls 3" x 2 1/2" (3.75 x .14) - 5' 4"
- 20 aj 2 Ls 3" x 2 1/2" (3.75 x .14) - 2' 10 1/2"
- 7/75\* ak 4 R. Bolts 3/4" x 1 1/2" u.h.
- 8 5/8" W.R. Clips

Required  
One Cages C5  
12 Platforms C6  
24 Railings R1  
2 Cages C5x

Material: Med. Oil Steel, ASTM A7-36.  
O. Holes: 1/8" except as noted.  
Rivets: 3/4"  
Edge Dist. 1 1/2" unless noted.  
Paint: One coat of black.  
Wire Rope G-19 B/C



Cages for Erection of  
Deer Isle-Sedgwick, Me. Bridge

Examined and approved:

Supt. of Erection

C.O. 457x T.O. Dwg. C4

The Phoenix Bridge Co.  
Erection Dept.  
R.S. Foulds, Engr.  
Wm. H. Ellis, Asst. Engr.  
Scale: 1" = 1'  
Date: June 23, 1938

